

BOLT-ON BUNG CAP ASSEMBLY

Ideal for installing on materials that are too fragile to weld, composites or components with a protective finish. Includes silver anodized aluminum bung, mounting hardware and Buna O-ring for cap and bung.



1-5/8" CAP

C73-735-B..... Black
C73-736-B..... Red
C73-737-B..... Blue
C73-738-B..... Silver
C73-739-B..... Polished

1-1/4-12 straight thread
4 holes on 2" bolt circle dia.
9/16" bung height



2" CAP

C73-755-B..... Black
C73-756-B..... Red
C73-757-B..... Blue
C73-758-B..... Silver
C73-759-B..... Polished

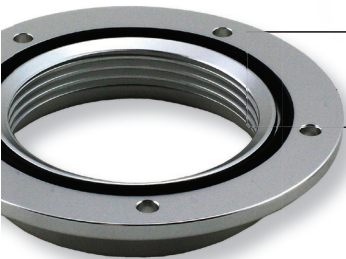
1-1/2-12 straight thread
4 holes on 2-1/4" bolt circle dia.
9/16" bung height



2-3/4" CAP

C73-775-B..... Black
C73-776-B..... Red
C73-777-B..... Blue
C73-778-B..... Silver
C73-779-B..... Polished

2-1/4-10 straight thread
5 holes on 3-1/8" bolt circle dia.
1 1/16" bung height



Bung is machined to accept Buna O-ring for leak-proof seal

Easy bolt-on installation.



REMOTE MOUNT BUNG CAP ASSEMBLY

Remote mounting increases versatility to any installation. Includes silver anodized aluminum bung, mounting hardware and Buna O-ring for cap.



2" CAP 2" HOSE

C73-755-H2..... Black
C73-756-H2..... Red
C73-757-H2..... Blue
C73-758-H2..... Silver
C73-759-H2..... Polished

1-1/2-12 straight thread
4 holes on 2-3/4" bolt circle dia.
9/16" bung height



2-3/4" CAP 2" HOSE

C73-775-H2..... Black
C73-779-H2..... Polished

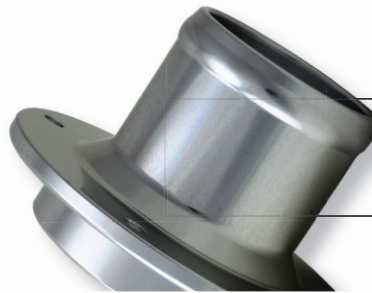
2-1/4-10 straight thread
4 holes on 3-1/4" bolt circle dia.
1 1/16" bung height



2-3/4" CAP 2-1/2" HOSE

C73-775-H25..... Black
C73-779-H25..... Polished

2-1/4-10 straight thread
4 holes on 3-1/4" bolt circle dia.
1 1/16" bung height



Integrated nipple barb for improved sealing and increased hose retention.

Rev. Date 5-01-20

THE MOST COMPLETE SELECTION OF VERSATILE FILLING SOLUTIONS



- Positive grip finger notches

- Choice of five brilliant colors to compliment your style

- Quick-starting coarse threads

- Mounting bungs to fit every application



**Proudly Made
In the USA!**

**PRECISION COMPONENTS
FOR QUALITY FABRICATION**



TM

ALUMINUM WELD-IN BUNG CAP ASSEMBLY

This assembly is for aluminum fabrication when welding is required. Additional bung heights are available separately. Includes Buna O-ring for cap.

1-5/8" CAP

- C73-735 Black
- C73-736 Red
- C73-737 Blue
- C73-738 Silver
- C73-739 Polished

1-1/4-12 straight thread
1/2" bung height

2" CAP

- C73-755 Black
- C73-756 Red
- C73-757 Blue
- C73-758 Silver
- C73-759 Polished

1-1/2-12 straight thread
1/2" bung height

2-3/4" CAP

- C73-775 Black
- C73-776 Red
- C73-777 Blue
- C73-778 Silver
- C73-779 Polished

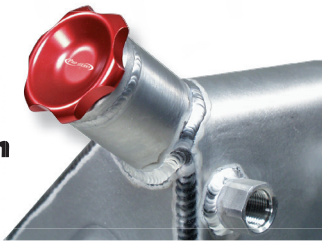
2-1/4-10 straight thread
5/8" bung height

4-1/4" CAP

- C74-775 Black
- C74-776 Red
- C74-777 Blue
- C74-778 Silver
- C74-779 Polished

3-3/4-8 straight thread
1 1/16" bung height

Unlimited application opportunities.



RECESSED REMOTE BUNG CAP ASSEMBLY

An attractive flush mount solution for locating a filling point on a panel. Includes cap, silver anodized aluminum bung, mounting hardware and Buna O-ring for cap.

2" CAP 2" HOSE

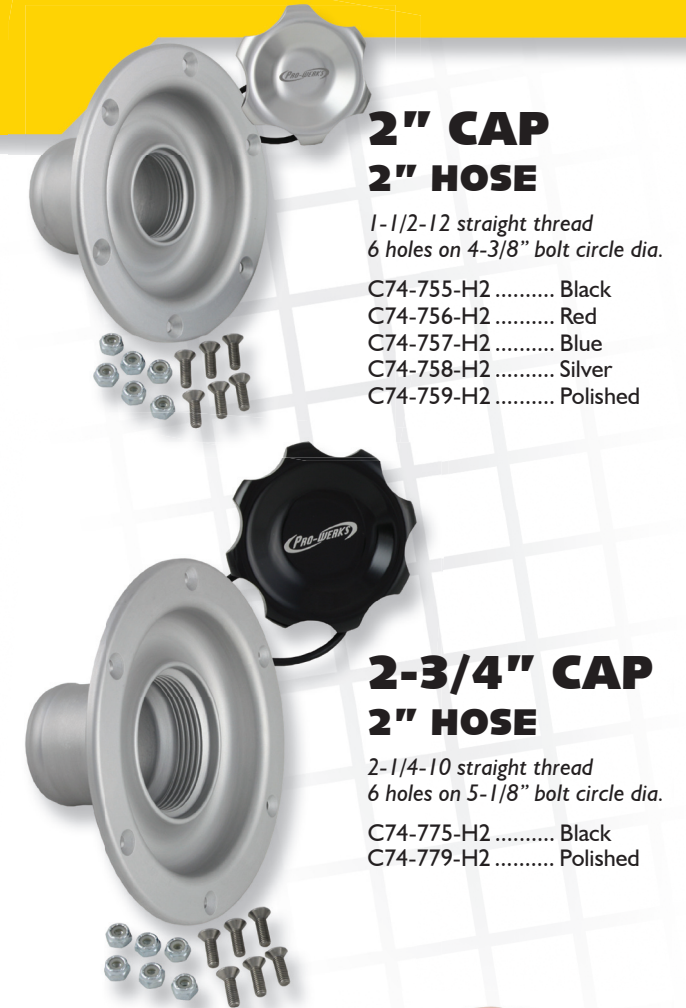
1-1/2-12 straight thread
6 holes on 4-3/8" bolt circle dia.

- C74-755-H2 Black
- C74-756-H2 Red
- C74-757-H2 Blue
- C74-758-H2 Silver
- C74-759-H2 Polished

2-3/4" CAP 2" HOSE

2-1/4-10 straight thread
6 holes on 5-1/8" bolt circle dia.

- C74-775-H2 Black
- C74-779-H2 Polished



SMART DESIGN

Pro-Werks EASY TURN fill caps are precision machined from lightweight billet aluminum, and non-vented with a positive sealing "radial squeeze" O-ring that holds the cap secure.

Available in your choice of Pro-Werks Brilliance anodized colors or micro-polished aluminum. Individual components also sold separately.



STEEL WELD-IN BUNG CAP ASSEMBLY

Perfect for custom steel fabrication when welding is required. Bungs are also available separately in stainless steel and additional heights. Includes Buna O-ring for cap.

1-5/8" CAP

- C73-730 Black
- C73-731 Red
- C73-732 Blue
- C73-733 Silver
- C73-734 Polished

1-1/4-12 straight thread
1/2" bung height

2" CAP

- C73-750 Black
- C73-751 Red
- C73-752 Blue
- C73-753 Silver
- C73-754 Polished

1-1/2-12 straight thread
1/2" bung height

2-3/4" CAP

- C73-770 Black
- C73-771 Red
- C73-772 Blue
- C73-773 Silver
- C73-774 Polished

2-1/4-10 straight thread
5/8" bung height

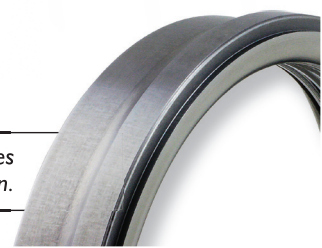
4-1/4" CAP

- C74-770 Black
- C74-771 Red
- C74-772 Blue
- C74-773 Silver
- C74-774 Polished

3-3/4-8 straight thread
1 1/16" bung height

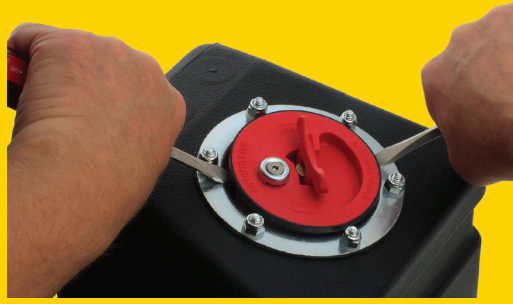


Stepped shoulder provides positioning during fabrication.



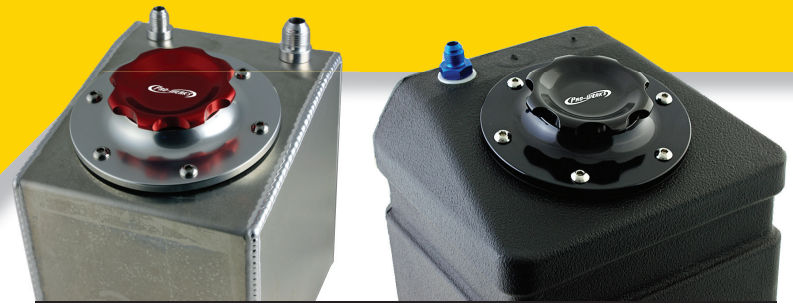
BOLT-ON FUEL CELL ASSEMBLIES

**EASY
TURN
FILL CAPS**



Stop fighting the troublesome original.

Direct replacement provides simple installation



6 BOLT ASSEMBLY

2-3/4" cap, 2-1/4-10 straight thread
6 holes on 4-7/16" bolt circle dia.
3/4" bung height



Includes mounting hardware, Buna flange gasket, and Cap O-ring

SILVER 6 BOLT BUNG ASSEMBLY



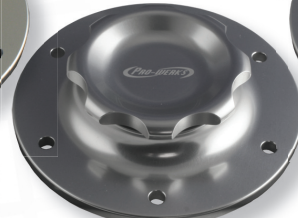
C73-705 Black Cap



C73-706 Red Cap



C73-707 Blue Cap



C73-708 Silver Cap



C73-709 Polished Cap

BLACK 6 BOLT BUNG ASSEMBLY



C73-705-BLK Black Cap



C73-706-BLK Red Cap



C73-707-BLK Blue Cap



C73-708-BLK Silver Cap



C73-709-BLK Polished Cap

WATCH THE VIDEO

www.Pro-Werks.com/FillCaps



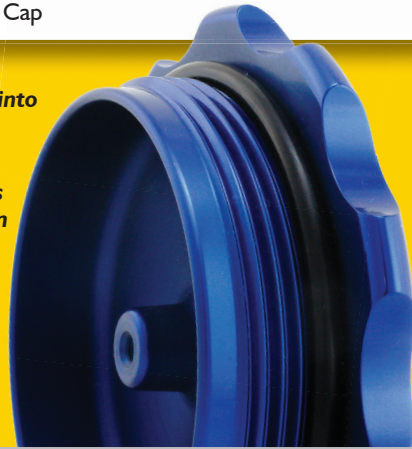
"You can always count on Pro-Werks to do it right!"



Part # C73-715

LANYARD CHAIN KIT
fits all fuel cell assemblies

- Starter nose leads cap into position
- Integrated lanyard boss to attach optional chain
- Quick acting coarse threads
- Positive sealing "radial squeeze" Buna O-ring



12 BOLT ASSEMBLY

4-1/4" cap, 3-3/4-8 straight thread
12 holes on 5-11/32" bolt circle dia.
7/8" bung height



Includes mounting hardware, Buna flange gasket, and Cap O-ring

SILVER 12 BOLT BUNG ASSEMBLY



C74-715 Black Cap



C74-716 Red Cap



C74-717 Blue Cap



C74-718 Silver Cap



C74-719 Polished Cap

BLACK 12 BOLT BUNG ASSEMBLY



C74-715-BLK Black Cap



C74-716-BLK Red Cap



C74-717-BLK Blue Cap

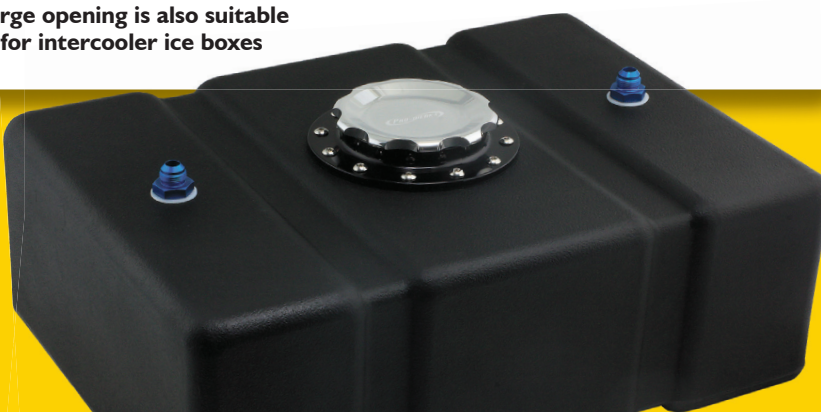
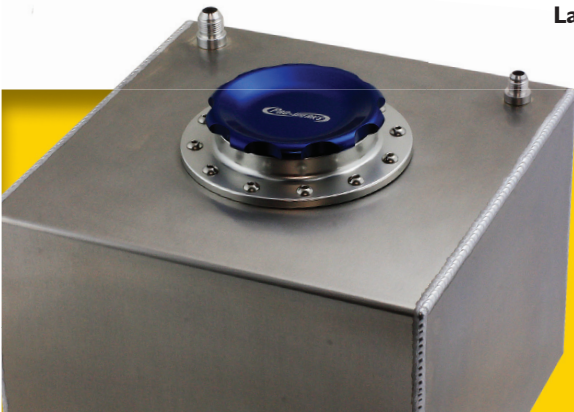


C74-718-BLK Silver Cap



C74-719-BLK Polished Cap

Large opening is also suitable for intercooler ice boxes



PRECISION COMPONENTS FOR QUALITY FABRICATION

PRO-WERKS™

For more information, visit:

WWW.PRO-WERKS.COM