

**Unlimited application**



- C74-775 ..... Black
- C74-776 ..... Red
- C74-777 ..... Blue
- C74-779 ..... Polished
- 4-1/4" CAP**
- C73-775 ..... Black
- C73-776 ..... Red
- C73-777 ..... Blue
- C73-779 ..... Polished
- 2-3/4" CAP**
- C73-755 ..... Black
- C73-756 ..... Red
- C73-757 ..... Blue
- C73-759 ..... Polished
- 2" CAP**
- C73-735 ..... Black
- C73-736 ..... Red
- C73-737 ..... Blue
- C73-739 ..... Polished
- 1-5/8" CAP**

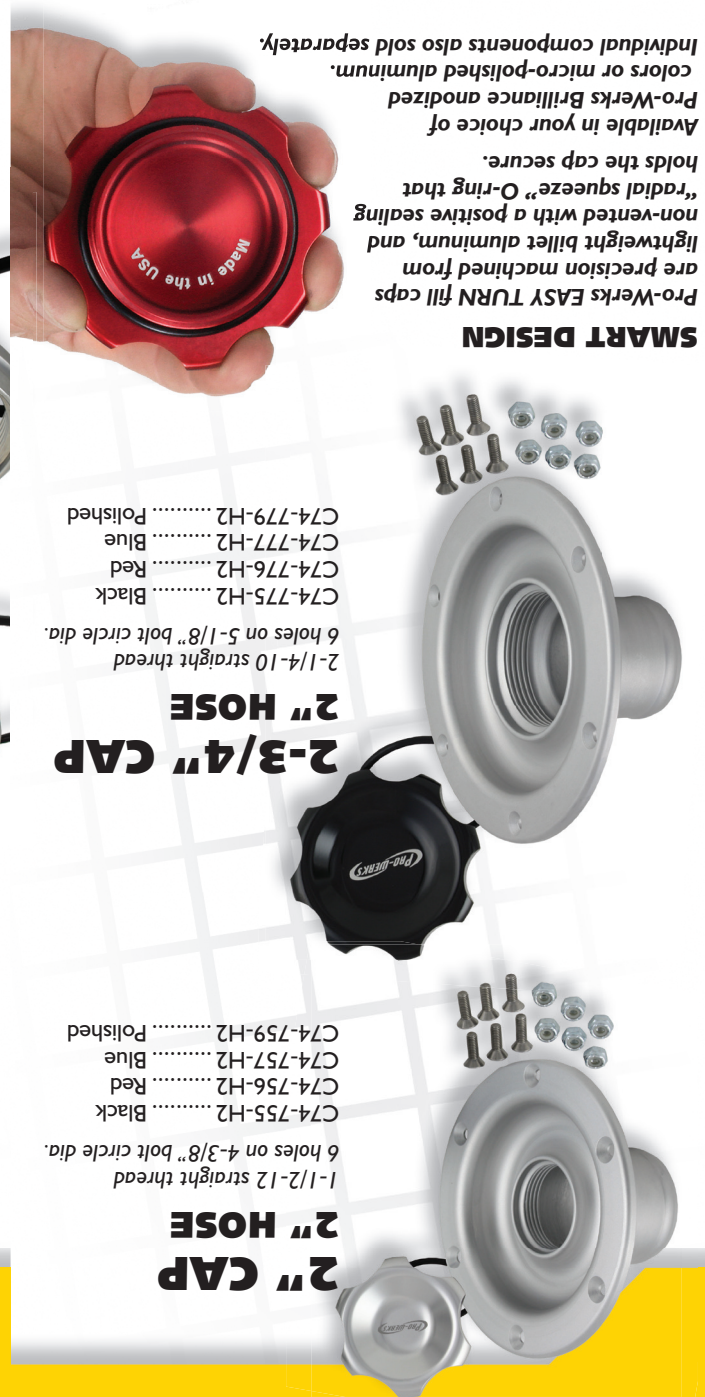
3-3/4" straight thread  
1 1/16" bung height

2-1/4" straight thread  
5/8" bung height

1-1/2" straight thread  
1/2" bung height

1-1/4" straight thread  
1/2" bung height

Available in your choice of Pro-Werks Brilliant anodized colors or micro-polished aluminum. Individual components also sold separately.



- C74-775-H2 ..... Black
- C74-776-H2 ..... Red
- C74-777-H2 ..... Blue
- C74-779-H2 ..... Polished
- 2" HOSE**
- C74-755-H2 ..... Black
- C74-756-H2 ..... Red
- C74-757-H2 ..... Blue
- C74-759-H2 ..... Polished
- 2-3/4" CAP**
- C74-775-H2 ..... Black
- C74-776-H2 ..... Red
- C74-777-H2 ..... Blue
- C74-779-H2 ..... Polished
- 2" HOSE**
- C74-735-H2 ..... Black
- C74-736-H2 ..... Red
- C74-737-H2 ..... Blue
- C74-739-H2 ..... Polished
- 2" CAP**

6 holes on 5-1/8" bolt circle dia.  
2-1/4" straight thread  
1-1/4" straight thread

6 holes on 4-3/8" bolt circle dia.  
1-1/2" straight thread

Stepped shoulder provides positioning during fabrication.



- C74-770 ..... Black
- C74-771 ..... Red
- C74-772 ..... Blue
- C74-774 ..... Polished
- 4-1/4" CAP**
- C73-770 ..... Black
- C73-771 ..... Red
- C73-772 ..... Blue
- C73-774 ..... Polished
- 2-3/4" CAP**
- C73-750 ..... Black
- C73-751 ..... Red
- C73-752 ..... Blue
- C73-754 ..... Polished
- 2" CAP**
- C73-730 ..... Black
- C73-731 ..... Red
- C73-732 ..... Blue
- C73-734 ..... Polished
- 1-5/8" CAP**

3-3/4" straight thread  
1 1/16" bung height

2-1/4" straight thread  
5/8" bung height

1-1/2" straight thread  
1/2" bung height

1-1/4" straight thread  
1/2" bung height

This assembly is for aluminum fabrication when welding is required. Additional bung heights are available separately. Includes Buna O-ring for cap.

**ALUMINUM WELD-IN BUNG CAP ASSEMBLY**

**THE MOST COMPLETE SELECTION OF VERSATILE FILLING SOLUTIONS**



- Positive grip finger notches
- Choice of four brilliant colors to compliment your style
- Quick-starting coarse threads
- Mounting bungs to fit every application

**Proudly Made in the USA!**

**PRECISION COMPONENTS FOR QUALITY FABRICATION**



An attractive flush mount solution for locating a filling point on a panel. Includes cap, silver anodized aluminum bung, mounting hardware and Buna O-ring for cap.

**RECESSED REMOTE BUNG CAP ASSEMBLY**

**REMOTE MOUNT BUNG CAP ASSEMBLY**

Remote mounting increases versatility to any installation. Includes silver anodized aluminum bung, mounting hardware and Buna O-ring for cap.



- C73-735-B ..... Black
- C73-736-B ..... Red
- C73-737-B ..... Blue
- C73-739-B ..... Polished
- 1-5/8" CAP**
- C73-755-H2 ..... Black
- C73-756-H2 ..... Red
- C73-757-H2 ..... Blue
- C73-759-H2 ..... Polished
- 2" CAP**
- C73-775-H2 ..... Black
- C73-776-H2 ..... Red
- C73-777-H2 ..... Blue
- C73-779-H2 ..... Polished
- 2-3/4" CAP**
- C73-775-H25 ..... Black
- C73-776-H25 ..... Red
- C73-777-H25 ..... Blue
- C73-779-H25 ..... Polished
- 2-3/4" CAP 2-1/2" HOSE**

1-1/2" straight thread  
4 holes on 2-3/4" bolt circle dia.  
9/16" bung height

2-1/4-10 straight thread  
4 holes on 3-1/4" bolt circle dia.  
1 1/16" bung height

2-1/4-10 straight thread  
4 holes on 3-1/4" bolt circle dia.  
1 1/16" bung height

Perfect for custom steel fabrication when welding is required. Bungs are also available separately in stainless steel and additional heights. Includes Buna O-ring for cap.

**STEEL WELD-IN BUNG CAP ASSEMBLY**

**BOLT-ON BUNG CAP ASSEMBLY**

Ideal for installing on materials that are too fragile to weld, composites or components with a protective finish. Includes silver anodized aluminum bung, mounting hardware and Buna O-ring for cap and bung.



- C73-735-B ..... Black
- C73-736-B ..... Red
- C73-737-B ..... Blue
- C73-739-B ..... Polished
- 1-5/8" CAP**
- C73-755-B ..... Black
- C73-756-B ..... Red
- C73-757-B ..... Blue
- C73-759-B ..... Polished
- 2" CAP**
- C73-775-B ..... Black
- C73-776-B ..... Red
- C73-777-B ..... Blue
- C73-779-B ..... Polished
- 2-3/4" CAP**

1-1/4-12 straight thread  
4 holes on 2" bolt circle dia.  
9/16" bung height

1-1/2-12 straight thread  
4 holes on 2-1/4" bolt circle dia.  
9/16" bung height

2-1/4-10 straight thread  
5 holes on 3-1/8" bolt circle dia.  
1 1/16" bung height

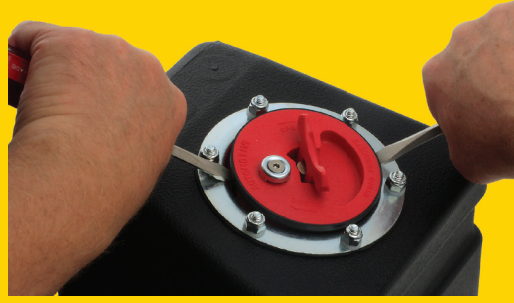
Bung is machined to accept Buna O-ring for leak-proof seal

Easy bolt-on installation.

Integrated nipple barb for improved sealing and increased hose retention.

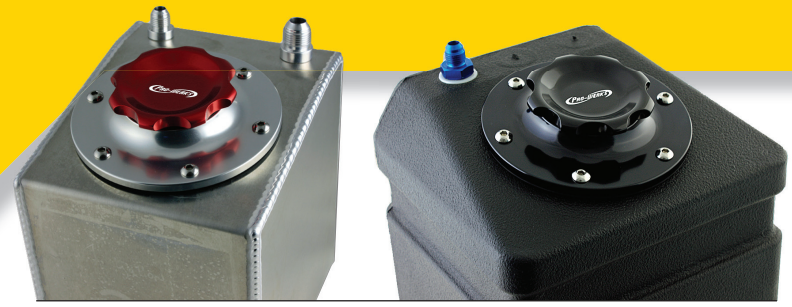
# BOLT-ON FUEL CELL ASSEMBLIES

**EASY  
TURN  
FILL CAPS**



Stop fighting the troublesome original.

Direct replacement provides simple installation



## 6 BOLT ASSEMBLY

2-3/4" cap, 2-1/4-10 straight thread  
6 holes on 4-7/16" bolt circle dia.  
3/4" bung height



Includes mounting hardware, Buna flange gasket, and Cap O-ring

## SILVER 6 BOLT BUNG ASSEMBLY



C73-705  
Black Cap



C73-706  
Red Cap



C73-707  
Blue Cap



C73-709  
Polished Cap

## BLACK 6 BOLT BUNG ASSEMBLY



C73-705-BLK  
Black Cap



C73-706-BLK  
Red Cap



C73-707-BLK  
Blue Cap



C73-709-BLK  
Polished Cap

WATCH THE VIDEO

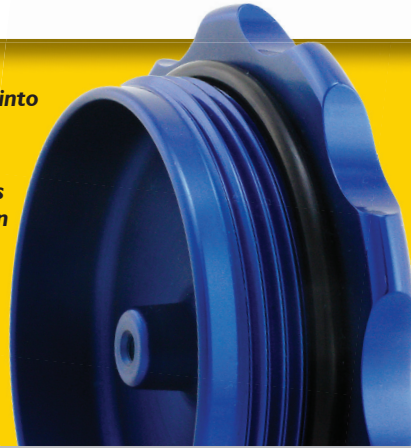


**"You can always count on Pro-Werks to do it right!"**

Part #  
C73-715

**LANYARD CHAIN KIT**  
fits all fuel cell assemblies

- Starter nose leads cap into position
- Integrated lanyard boss to attach optional chain
- Quick acting coarse threads
- Positive sealing "radial squeeze" Buna O-ring



## 12 BOLT ASSEMBLY

4-1/4" cap, 3-3/4-8 straight thread  
12 holes on 5-11/32" bolt circle dia.  
7/8" bung height



Includes mounting hardware, Buna flange gasket, and Cap O-ring

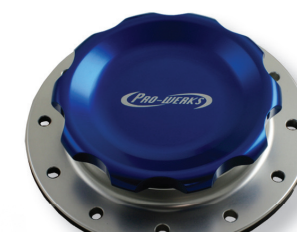
## SILVER 12 BOLT BUNG ASSEMBLY



C74-715  
Black Cap



C74-716  
Red Cap



C74-717  
Blue Cap



C74-719  
Polished Cap

## BLACK 12 BOLT BUNG ASSEMBLY



C74-715-BLK  
Black Cap



C74-716-BLK  
Red Cap

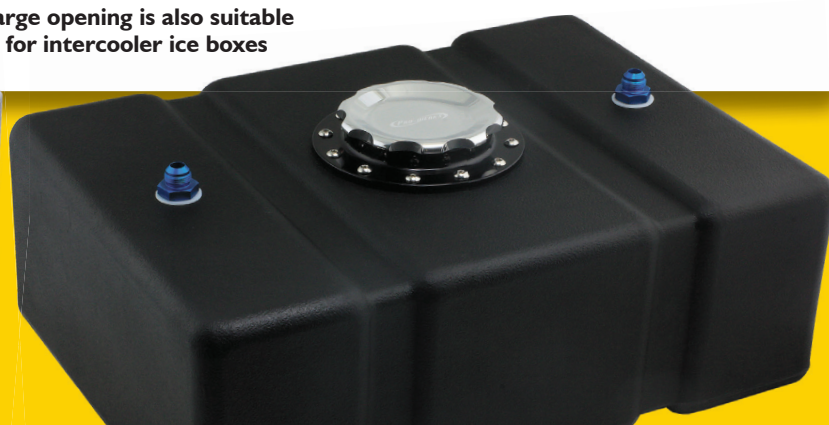
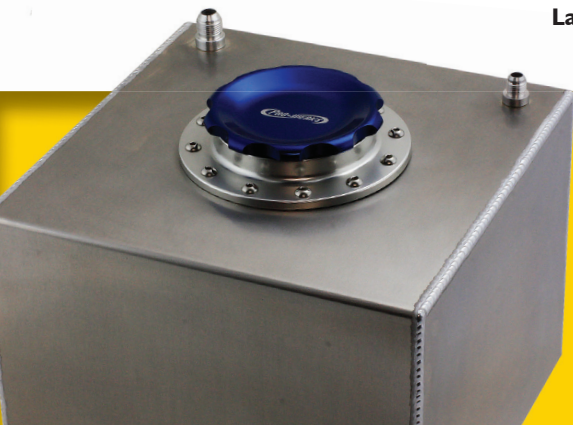


C74-717-BLK  
Blue Cap



C74-719-BLK  
Polished Cap

Large opening is also suitable for intercooler ice boxes



PRECISION COMPONENTS  
FOR QUALITY FABRICATION

**PRO-WERKS**™

For more information, visit:  
[WWW.PRO-WERKS.COM](http://WWW.PRO-WERKS.COM)